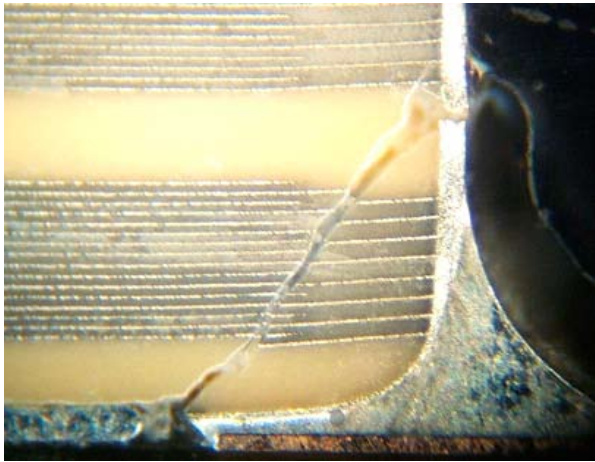


FAIL OPEN CAPACITORS

This risk of a cracked capacitor causing a short are high, and can result in large current surges. These large surges cause catastrophic failures in capacitors. Standard MLCCs are prone to cracking due to mishandling, de-panelization, and board flexing. In response to customer requests for parts that fail open in the event of a mechanical crack, JDI has introduced Fail Open Capacitors. Fail Open capacitors are designed so that they do not cause a short in the event of a mechanical crack.



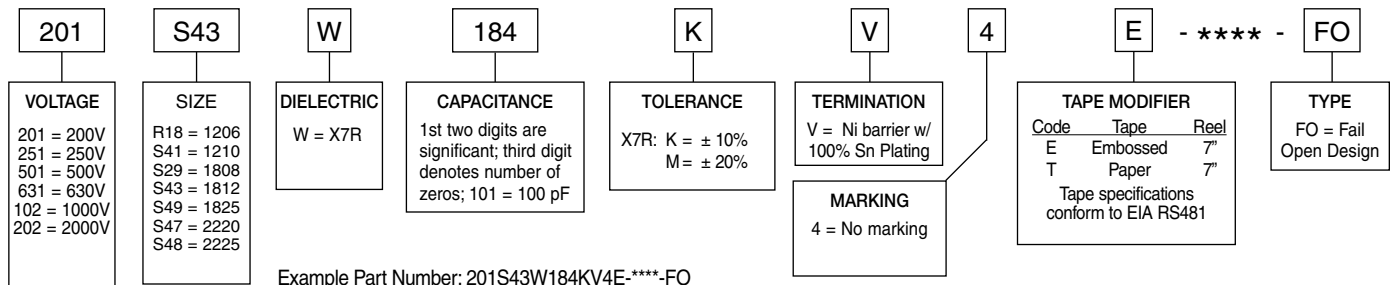
Standard Part



Fail Open Design

Since cracks never cross opposing electrodes, there is no chance of the crack causing a short.

HOW TO ORDER



FAIL OPEN AVAILABILITY: MAXIMUM CAPACITANCE VS RATED VOLTAGE (DC)

R18 / 1206 Inches mm L .125 ±.010 3.17 ±.25 W .062 ±.010 1.57 ±.25 T .067 Max 1.70 E/B .020 ±.010 0.51 ±.25	Voltage	100 V	200 V	250 V	500 V	630 V	1000V	
	X7R	.068 µF	.033 µF	.027 µF	.010 µF	8200 pF	4700 pF	
S41 / 1210 Inches mm L .125 ±.010 3.18 ±.25 W .095 ±.010 2.41 ±.25 T .080 Max 2.03 E/B .020 ±.010 0.51 ±.25	Voltage	100 V	200 V	250 V	500 V	630 V	1000 V	2000 V
	X7R	.150 µF	.082 µF	.068 µF	.029 µF	.018 µF	.010 µF	2900 pF
R29 / 1808 Inches mm L .180 ±.010 4.57 ±.25 W .080 ±.010 2.03 ±.25 T .080 Max 2.03 E/B .020 ±.010 0.51 ±.25	Voltage	100 V	200 V	250 V	500 V	630 V	1000 V	2000 V
	X7R	.220 µF	.120 µF	.100 µF	.039 µF	.033 µF	.015 µF	3300 pF
S43 / 1812 Inches mm L .175 ±.010 4.45 ±.25 W .125 ±.010 3.17 ±.25 T .110 Max 2.79 E/B .025±.015 0.64±.38	Voltage	100 V	200 V	250 V	500 V	630 V	1000 V	2000 V
	X7R	.330 µF	.180 µF	.180 µF	.082 µF	.068 µF	.022 µF	.010 µF
S49 / 1825 Inches mm L .180 ±.010 4.57 ±.25 W .250 ±.010 6.35 ±.25 T .140 Max 3.56 E/B .025 ±.015 0.64 ±.38	Voltage	100 V	200 V	250 V	500 V	630 V	1000 V	2000 V
	X7R	.680 µF	.390 µF	.330 µF	.220 µF	.180 µF	.068 µF	.022 µF
S47 / 2220 Inches mm L .225 ±.015 5.72 ±.38 W .200 ±.015 5.08 ±.38 T .150 Max 3.81 E/B .025 ±.015 0.64±.38	Voltage	100 V	200 V	250 V	500 V	630 V	1000 V	2000 V
	X7R	.820 µF	.490 µF	.470 µF	.290 µF	.220 µF	.100 µF	.027 µF
S48 / 2225 Inches mm L .225 ±.010 5.72 ±.25 W .255 ±.015 6.48 ±.38 T .150 Max 3.81 E/B .025 ±.015 0.64±.38	Voltage	100 V	200 V	250 V	500 V	630 V	1000 V	2000 V
	X7R	1.00 µF	.560 µF	.560 µF	.330 µF	.290 µF	.100 µF	.033 µF